



## ASSET BACKED ARBITRAGED SECURITIES (PROPRIETARY) LIMITED

(Incorporated with limited liability under Registration Number 2002/019991/07 in the Republic of South Africa)

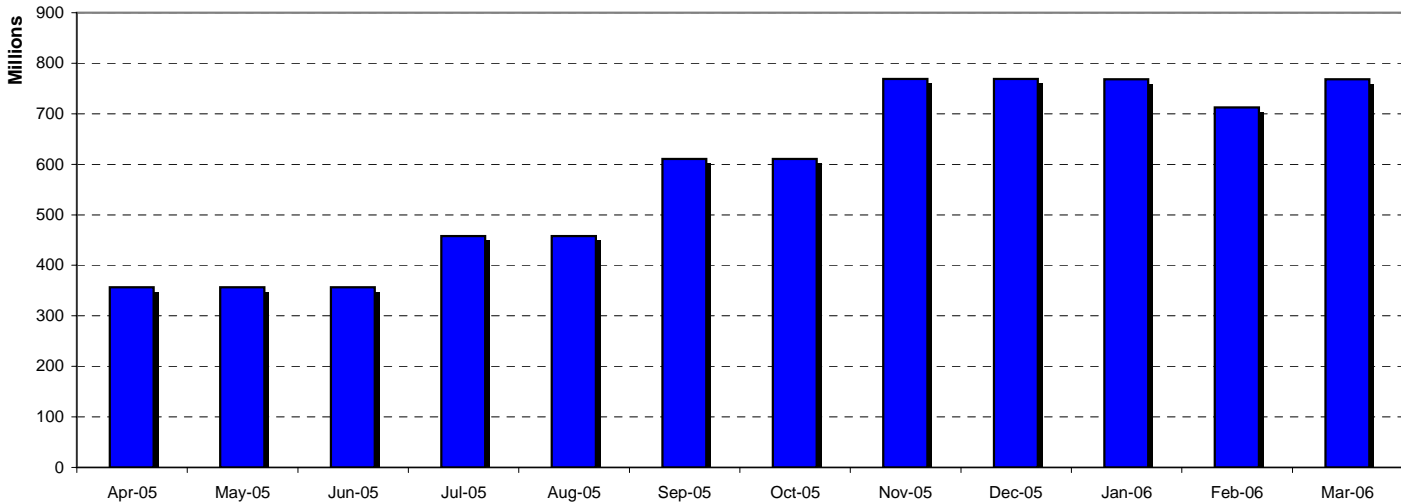
### ABACAS Latitude Series (Series 3)

31 March 2006

#### Commercial Paper Outstanding

Stock Code	Certificate Number	CA-Ratings	Issue Date	Maturity Date	Days to Maturity	Issue Price	Face Value	Weighting
ABC14	S3 / CP00014	zaA1	13-Jan-2006	13-Apr-2006	13	50,000,000	50,879,000	6.62%
ABC15	S3 / CP00015	zaA1	20-Jan-2006	20-Apr-2006	20	100,000,000	101,769,000	13.25%
ABC16	S3 / CP00016	zaA1	26-Jan-2006	26-Apr-2006	26	300,000,000	305,335,000	39.74%
ABC17	S3 / CP00017	zaA1	7-Feb-2006	8-May-2006	38	54,860,000	55,831,000	7.27%
ABC18	S3 / CP00018	zaA1	13-Mar-2006	12-Jun-2006	73	150,000,000	152,692,000	19.87%
ABC19	S3 / CP00019	zaA1	31-Mar-2006	30-Jun-2006	91	100,000,000	101,782,000	13.25%
<b>Total CP Outstanding</b>					<b>43.2 days</b>	<b>754,860,000</b>	<b>768,288,000</b>	<b>100.00%</b>

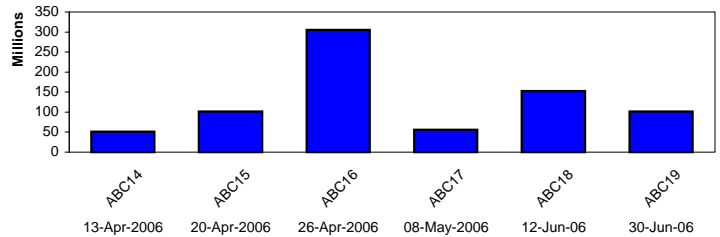
#### Face Value of Outstanding CP



#### Upcoming CP Maturities

Code	Maturity Date	Face Value	Days to Maturity
ABC14	13-Apr-2006	50,879,000.000	13
ABC15	20-Apr-2006	101,769,000.000	20
ABC16	26-Apr-2006	305,335,000.000	26
ABC17	8-May-2006	55,831,000.000	38
ABC18	12-Jun-2006	152,692,000.000	73
ABC19	30-Jun-2006	101,782,000.000	91
<b>Weighted Average Tenure of Outstanding CP</b>		<b>768,288,000.00</b>	<b>43.2 days</b>

#### ABACAS Series 3 Roll Dates



#### Underlying Assets

Code	Asset	Issue	WAL Maturity	WAL	Benchmark	Rating	Nominal Value	Weighting
COJ01	City of Jo'Burg	13-Apr-2004	13-Apr-2010	4.04	R153	zaA	50,000,000	6.62%
COJ03	City of Jo'Burg	26-Apr-2005	26-Apr-2013	7.08	R157	zaA	300,000,000	39.74%
Afrox PN	Promissory Note	29-Jul-2005	20-Jul-2007	1.30	3M Jibar	zaA1 Confirmation	100,000,000	13.25%
LGL1	Liberty Group	12-Sep-2005	12-Sep-2012	6.46	R153	zaE: A Confirmation	150,000,000.00	19.87%
VIP1C2	Vukile	07-Nov-2005	07-Nov-2012	6.61	3M Jibar	zaA1 Confirmation	54,860,000.00	7.27%
IN03	Inca	18-Nov-2005	11-Jun-2011	5.20	3M Jibar	zaA1 Confirmation	100,000,000.00	13.25%
<b>Total Assets in Portfolio</b>					<b>5.71 years</b>		<b>754,860,000.00</b>	<b>100.00%</b>



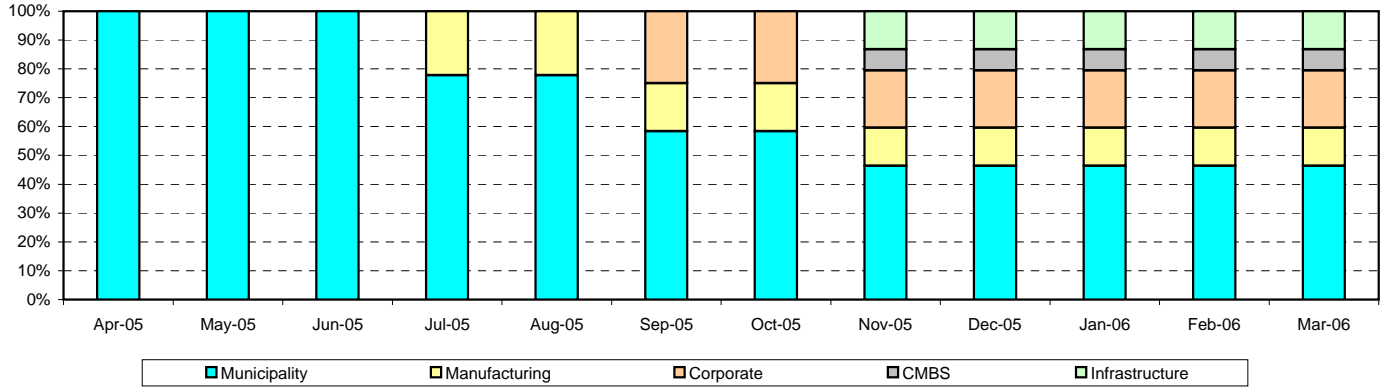
# ASSET BACKED ARBITRAGED SECURITIES (PROPRIETARY) LIMITED

(Incorporated with limited liability under Registration Number 2002/019991/07 in the Republic of South Africa)

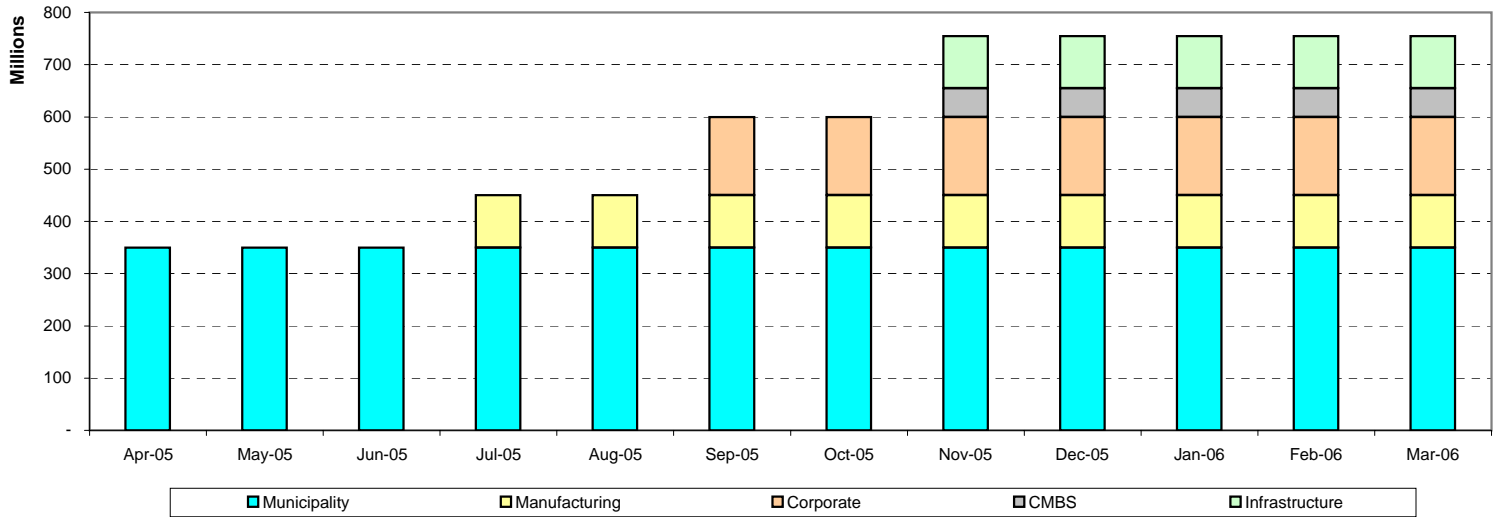
ABACAS Latitude Series (Series 3)

31 March 2006

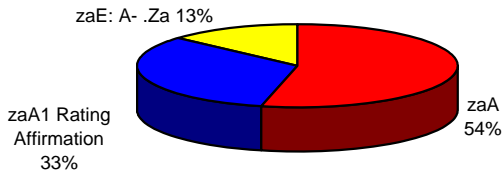
## Asset Pool Composition



## Asset Growth



## Credit Concentration of Assets



zaA	53.63%
zaA1 Rating Affirmation	33.12%
zaA1 Confirmation	13.25%

## Other

### Liquidity Facility Provider

Name	ACMB
Rating	zaA1+
Available Facility	768 (ZAR Million)
Drawn amount	0.00 (ZAR Million)

### Credit Enhancement Facility Provider

Name	ACMB
Rating	zaA1+
Available Facility	0 (ZAR Million)
Drawn amount	0.00 (ZAR Million)



## ASSET BACKED ARBITRAGED SECURITIES (PROPRIETARY) LIMITED

(Incorporated with limited liability under Registration Number 2002/019991/07 in the Republic of South Africa)

**ABACAS Latitude Series (Series 3)**

**31 March 2006**

### Contact Details

**Conduit Manager**

Luyolo Poswa  
Tel: 011 350 8390  
E-mail: luyolop@absa.co.za

**Consultant: Securitisation**

Zenelle Stofberg  
Tel: 011 350 2671  
E-mail: zenelles@absa.co.za

**Technical Manager**

Kuveshen Chetty  
Tel: 011 350 8581  
E-mail: kuveshenc@absa.co.za

**Transaction Manager**

Ajay Mistry  
Tel: 011 350 8963  
E-mail: ajaym@absa.co.za

**Dealers**

Correy Jansen van Vuuren  
Tel: 011 350 2349  
E-mail: correyv@absa.co.za

Nita Meintjies  
Tel: 011 350 2349  
E-mail: nitam@absa.co.za

Esther Bekker  
Tel: 011 350 2349  
E-mail: estherb@absa.co.za

Rob Moody  
Tel: 011 350 2364  
E-mail: robm@absa.co.za

**Disclaimer: Copyright 2006. Publisher: Absa Bank Limited. All rights reserved.**

The information in this document is derived from sources which are regarded as accurate and reliable and Absa Bank Limited ("Absa") does not guarantee the accuracy and/or completeness of said information. No responsibility for any error, omission or loss sustained by any person acting or refraining from acting as a result of this document is accepted by Absa and/or the author/s of the material. Past performance is not an indication of future performance and future returns are not guaranteed. It is recommended that independent detailed advice (i.e. tax, accounting, legal and financial advice) be obtained in each case prior to placing any reliance or acting on the information contained in this document.

This report has been prepared for general communication and information purposes only and may not be construed as an offer to buy or sell or a solicitation of an offer to buy or sell any financial instruments referred to herein, or to participate in any particular trading strategy in any jurisdiction in relation to such financial instruments. Any additional information regarding any financial instruments and/or financial products reviewed in this report is available upon request. Any unauthorised use or disclosure of this report is prohibited. Absa and/or its subsidiaries and/or affiliates may act as bankers, arrangers and/or advisors to issuers and/or market makers in financial instruments issued by such issuers as listed in this publication.

**Manager certification:**

The author/s as listed in this publication certifies that no part of its/their compensation was, is or will be, either directly or indirectly, related to the information expressed in this document.